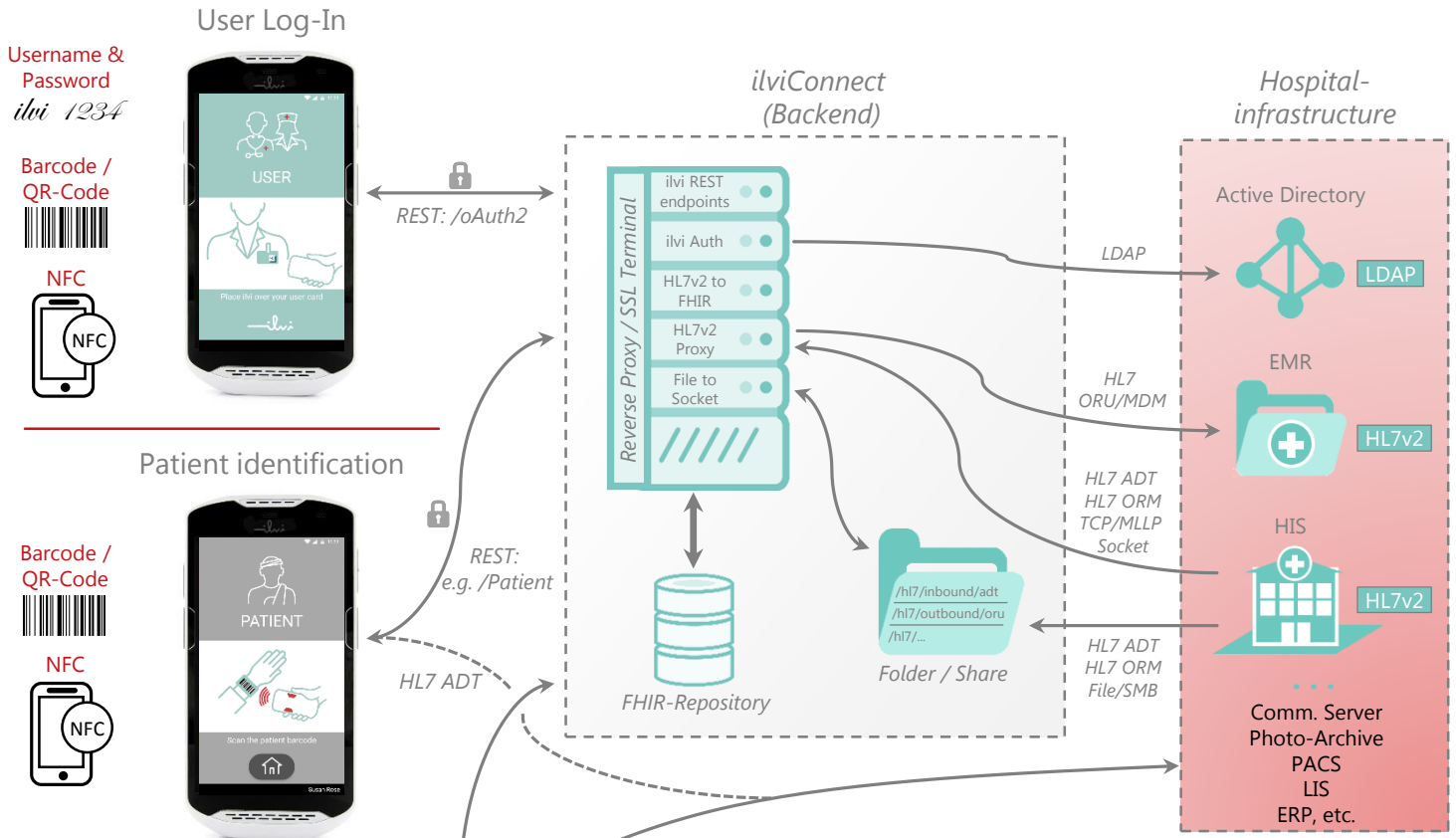




ilvi saves time and money for the clinic-IT

Lack of interoperability is often a show stopper for fast implementation in hospital digitalization. Like a mobile communication server ilvi can manage the data exchange with many medical devices. Also it can supply medical apps with patient information or picks up data from them. A connection to the HIS or any other target system is realized directly or via the ilvi backend. Managed by the local MDM ilvi can easily be integrated in the existing IT infrastructure and takes care of many interface jobs.



- i* Secure connectivity through enterprise WiFi-integration
- i* HL7-mapping flexible adoptable to existing infrastructure
- i* ilvi-groups and -users can be managed via Active Directory
- i* Authentication via password/PIN (LDAP) or token (NFC, Barcode)
- i* Adjustable email messages for communication errors
- i* Change in "Patient identifier (PID)" traceable with all revisions
- i* Simple maintenance via mobile device management (MDM)
- i* Manipulation-proof configuration – connectivity via encrypted endpoints
- i* Android OS: use of kiosk-mode and enterprise home screen (EHS)
- i* Encrypted data storage on device of recorded data
- i* After successful data transfer to target system, all local data will be erased

ilvi GmbH
Businesspark 4 | A-8200 Gleisdorf

www.ilvi.io
office@ilvi.io | T +43 5 0747 300



www.taidoc.com

TaiDoc Technology Corp.

B1-7F., No.127, Wugong 2nd Rd., Wugu Dist.,
New Taipei City 24888, Taiwan
Tel: +886-2-6625-8188 Fax: +886-2-6625-0288